

SOLID SURFACE COLOUR GUIDE

DuPont Corian Solid Surfaces Colour Groups

Please click on the manufacturer logo to continue

DuPont™
CORIAN®

The Corian range of colours is divided across 7 groups, with Group A being that for 'Glacier White' alone.

To explore each group of Corian colours please simply click on the links below.

GROUP A ('Glacier White')

GROUP B

GROUP C

GROUP D

GROUP E

GROUP F

GROUP G

To return to this menu at any time simply click on the DuPont Corian logo in the top left corner of the page.

Please note: any colours denoted with an * are considered to be *sensitive* and subject to a disclaimer

[Return to main selection page](#)



GLACIER WHITE

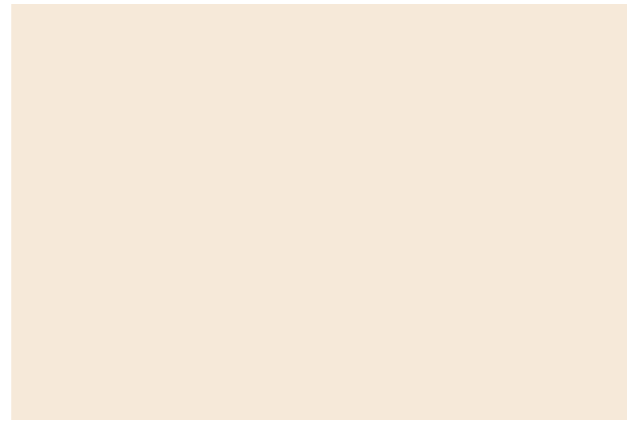
[Return to main selection page](#)

DuPont™
CORIAN®

GROUP B



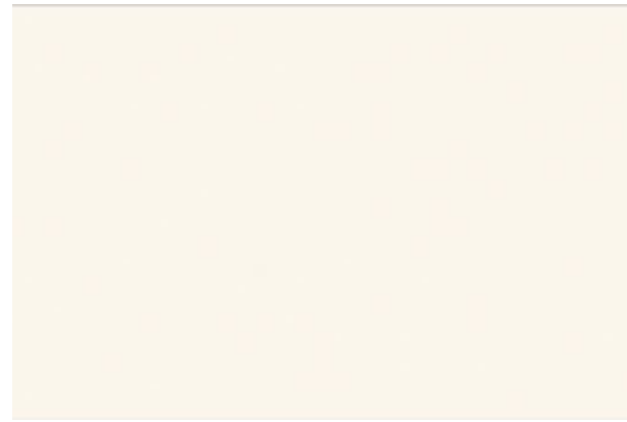
ATHENA GREY *



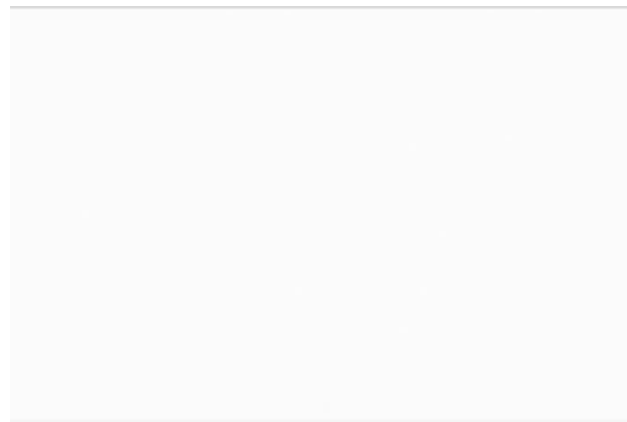
BISQUE



BONE



CAMEO WHITE



DESIGNER WHITE

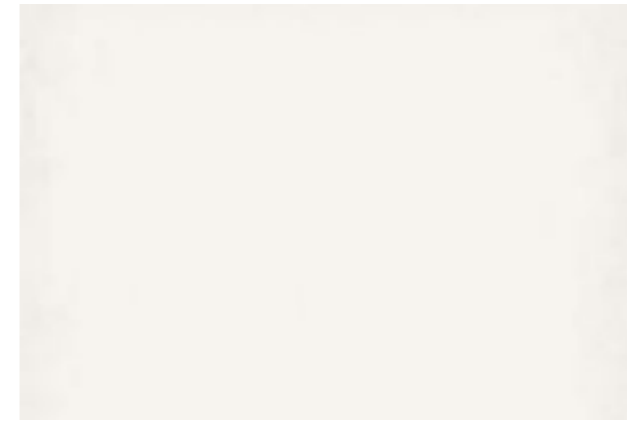


ELEGANT GREY

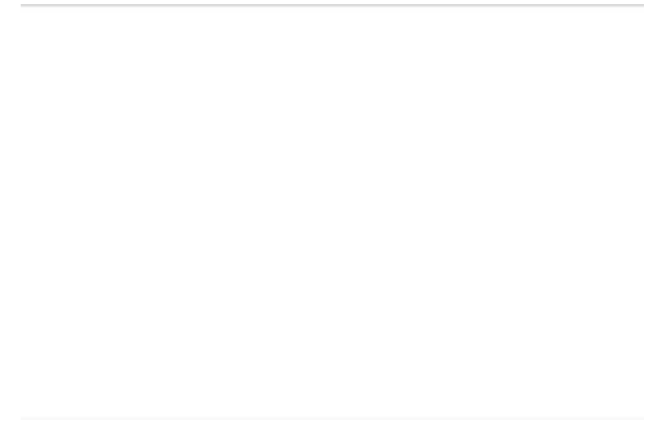
[Return to main selection page](#)

DuPont™
CORIAN®

GROUP B



GLACIER ICE *



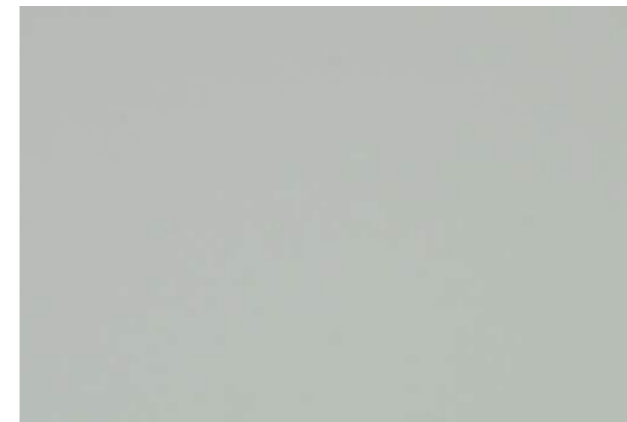
LIGHT ASH



MINT ICE *



PEARL GREY



SEAGRASS

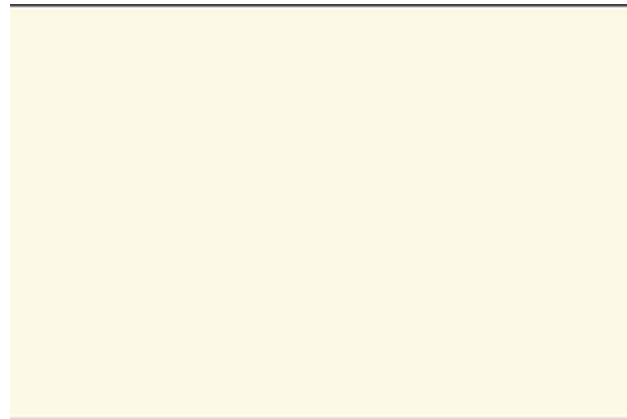


SILVER GREY

[Return to main selection page](#)

DuPont™
CORIAN®

GROUP B



VANILLA

[Return to main selection page](#)

Please Note: This guide is provided as an indicative resource only, representing the colours available in each product group. The representation of Solid Surface colours digitally, or in print, may not provide 100% accuracy in relation to the colour or finish against physical material samples. BSF Solid Surfaces Ltd. bear no responsibility as to the level of colour accuracy in this digital guide. The contents and colours in this guide are subject to change as per the material supplier's availability.

DuPont™
CORIAN®

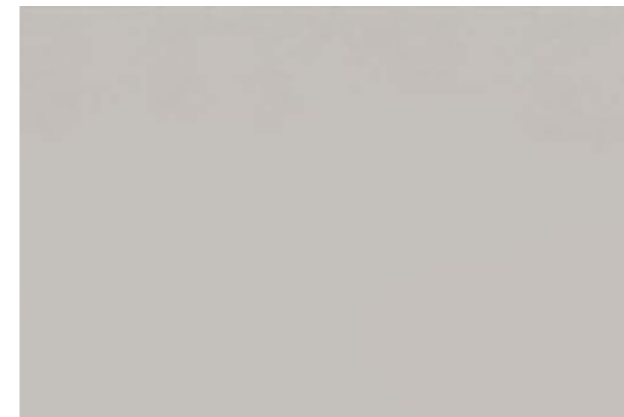
GROUP C



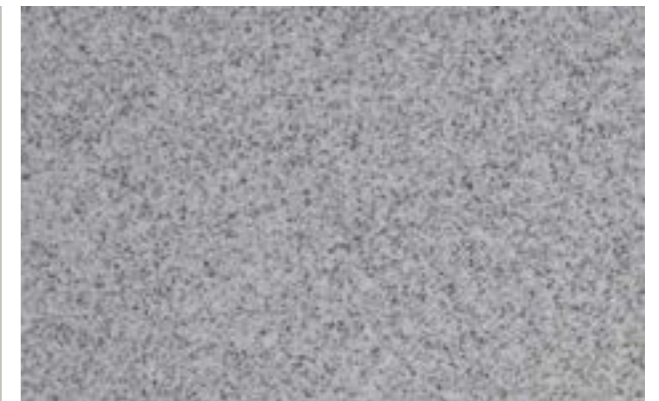
AURORA



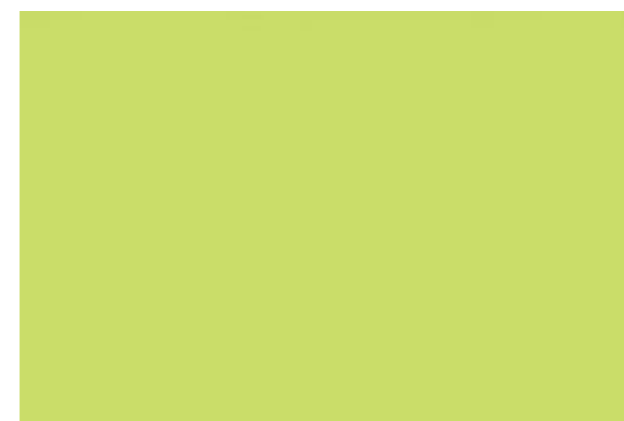
CITRUS ORANGE *



CLAY



DUSK



GRAPE GREEN *



HOT *

[Return to main selection page](#)

DuPont™
CORIAN®

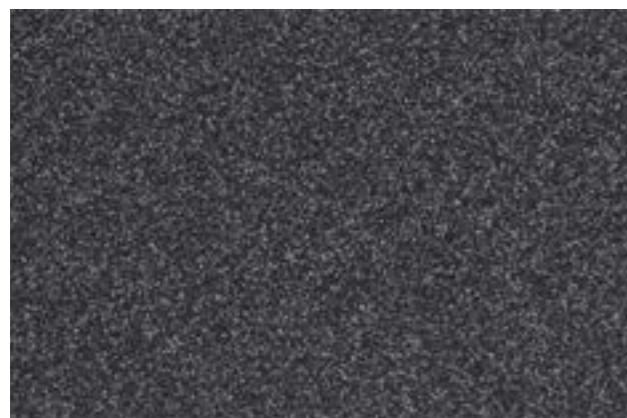
GROUP C



IMPERIAL YELLOW



LINEN



MIDNIGHT



SILT



WARM GREY



STRATUS

[Return to main selection page](#)

DuPont™
CORIAN®

GROUP D



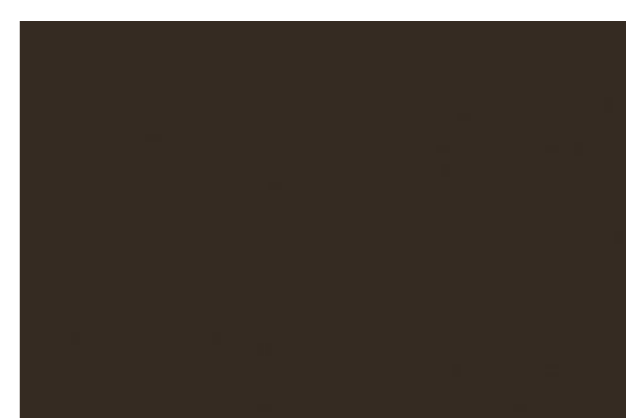
BLOOMING GREEN



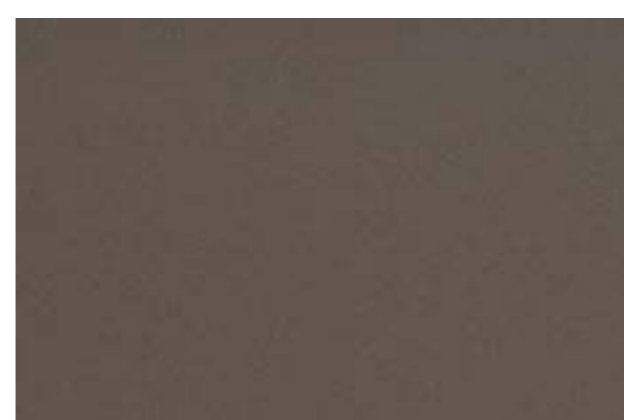
DEEP CAVIAR *



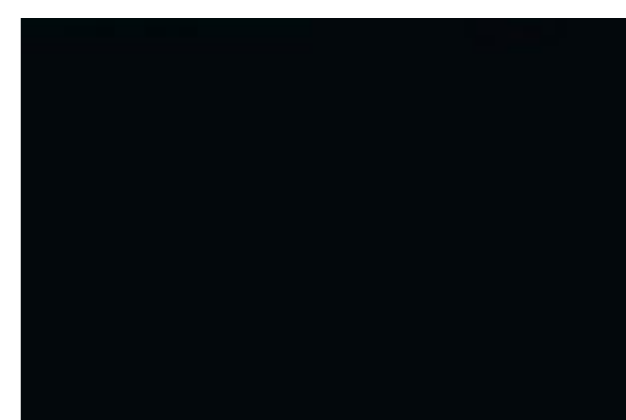
DEEP CLOUD *



DEEP ESPRESSO *



DEEP MINK *



DEEP NOCTURNE *

[Return to main selection page](#)



DEEP SABLE



DEEP TITANIUM *



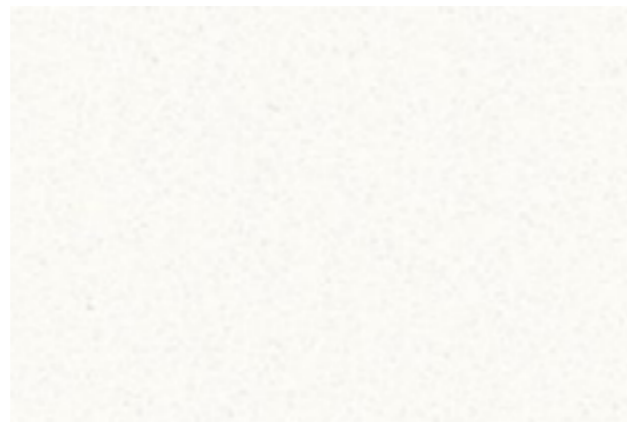
DOVE



RAFFIA



SIENNA BROWN *



SPARKLING WHITE

[Return to main selection page](#)



VENARO WHITE *



WHITE JASMINE



VERDANT



LAGUNA BLUE

[Return to main selection page](#)



ABALONE



ANTHRACITE *



ASH CONCRETE



CANYON



CARBON CONCRETE



EVEREST

[Return to main selection page](#)

Please Note: This guide is provided as an indicative resource only, representing the colours available in each product group. The representation of Solid Surface colours digitally, or in print, may not provide 100% accuracy in relation to the colour or finish against physical material samples. BSF Solid Surfaces Ltd. bear no responsibility as to the level of colour accuracy in this digital guide. The contents and colours in this guide are subject to change as per the material supplier's availability.



MATTERHORN



NEUTRAL CONCRETE



WEATHERED CONCRETE

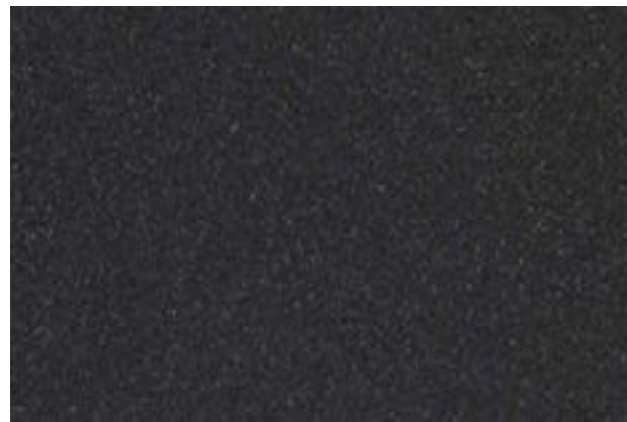


WILLOW

[Return to main selection page](#)

DuPont™
CORIAN®

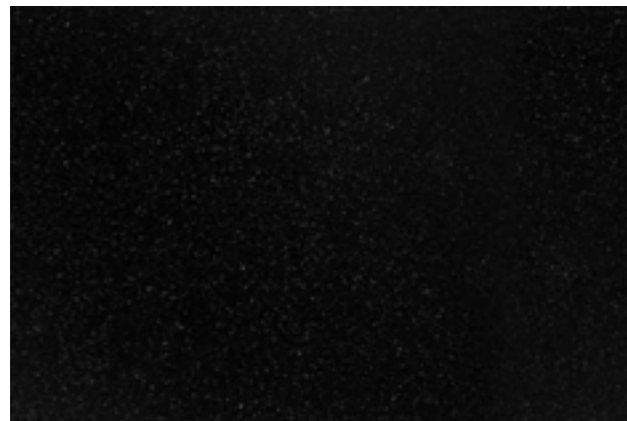
GROUP F



DEEP ANTHRACITE *



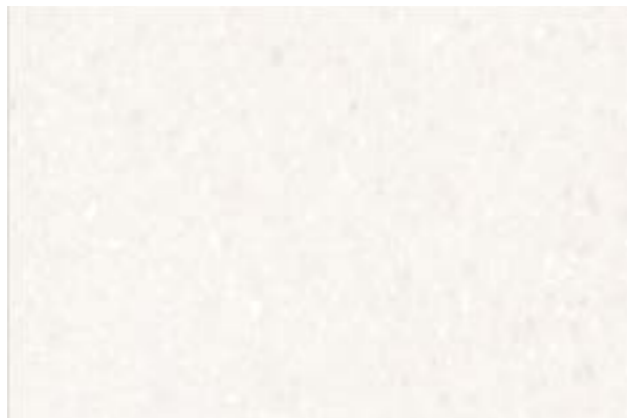
DEEP BLACK QUARTZ *



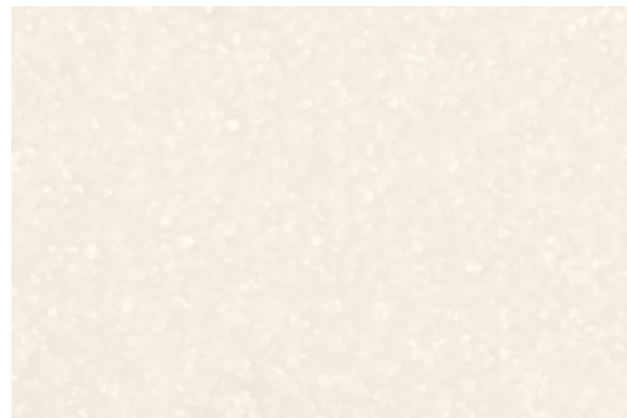
DEEP NIGHT SKY *



DEEP STORM *



ANTARCTICA



ARCTIC ICE

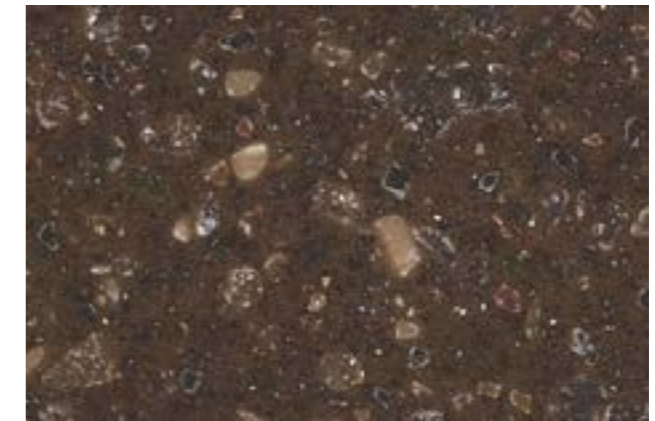
[Return to main selection page](#)

DuPont™
CORIAN®

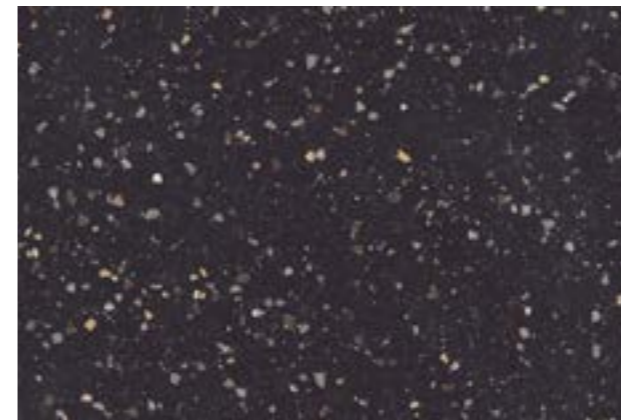
GROUP F



CLAM SHELL *



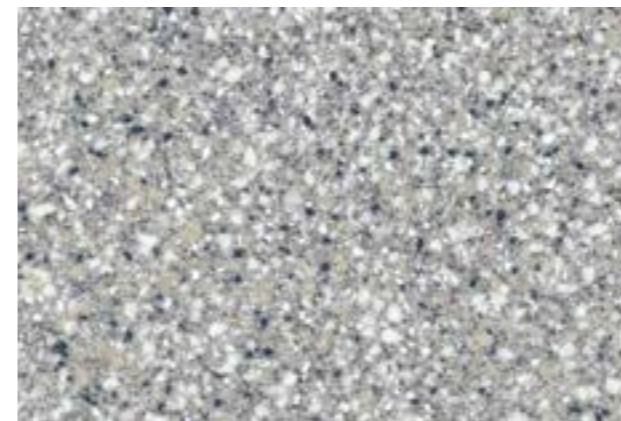
COCOA BROWN



GRAVEL *



GRAYLITE



PLATINUM



RAIN CLOUD *

[Return to main selection page](#)

Please Note: This guide is provided as an indicative resource only, representing the colours available in each product group. The representation of Solid Surface colours digitally, or in print, may not provide 100% accuracy in relation to the colour or finish against physical material samples. BSF Solid Surfaces Ltd. bear no responsibility as to the level of colour accuracy in this digital guide. The contents and colours in this guide are subject to change as per the material supplier's availability.

DuPont™
CORIAN®

GROUP F



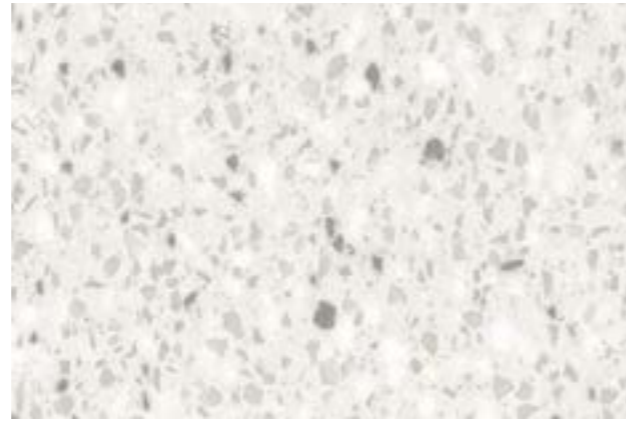
SANDALWOOD *



SAVANNAH



SAHARA



SILVER BIRCH



WITCH HAZEL *



KEYSTONE

[Return to main selection page](#)

DuPont™
CORIAN®

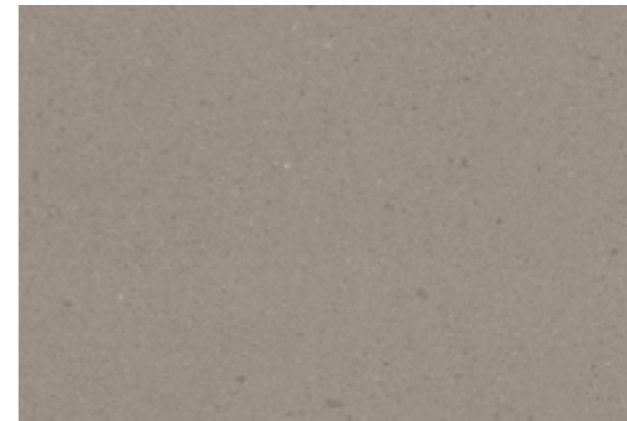
GROUP F



SILVER LINEAR



SEPIA LINEAR



COOL GREY

[Return to main selection page](#)

DuPont™
CORIAN®

GROUP G



ARROWROOT *



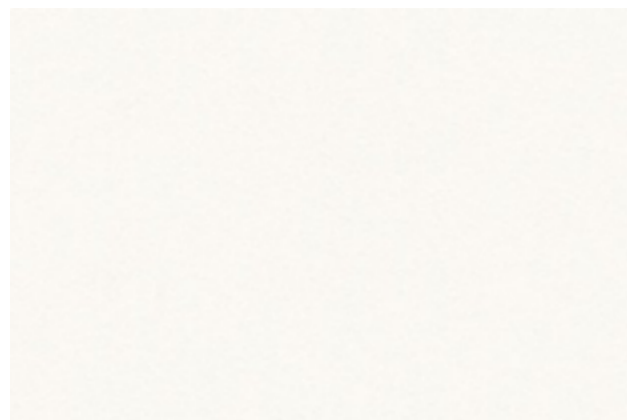
ASPEN



BURLED BEACH *



GREY ONYX



SALT



ASH AGGREGATE

DuPont™
CORIAN®

GROUP G



DUNE PRIMA *



LAVA ROCK



HAZELNUT *



ECRU *



COCOA PRIMA *



COSMOS PRIMA *

[Return to main selection page](#)

[Return to main selection page](#)

DuPont™
CORIAN®

GROUP G



EVENING PRIMA *



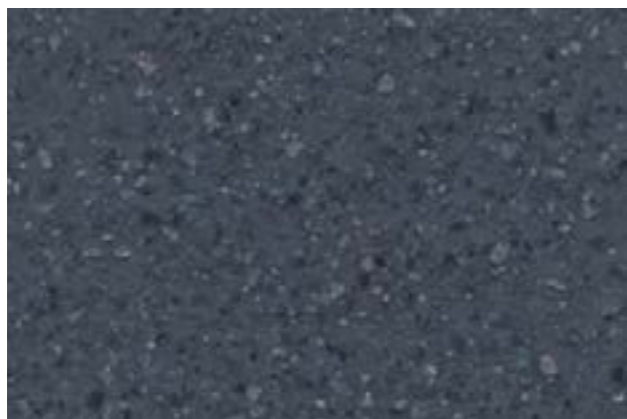
ROSEMARY *



NIMBUS PRIMA *



LIMESTONE PRIMA *



MINERAL



JUNIPER *

[Return to main selection page](#)

DuPont™
CORIAN®

GROUP G



SAGEBRUSH *



SONORA *



SORREL *



TUMBLEWEED *



WHITE ONYX



WHITECAP

[Return to main selection page](#)

DuPont™
CORIAN®

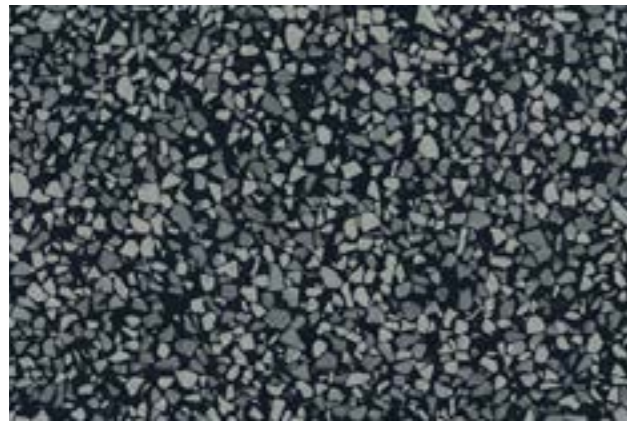
GROUP G



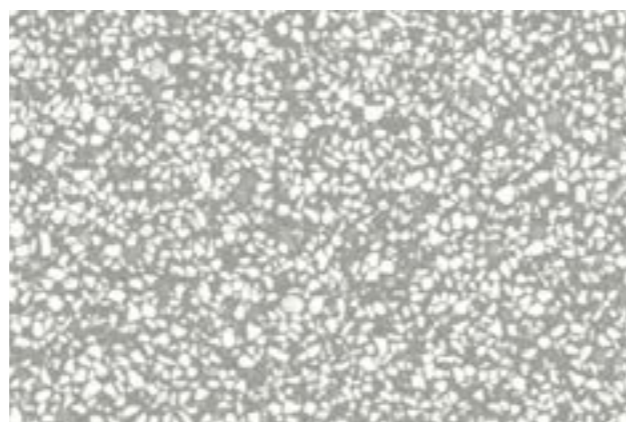
WEATHERED AGGREGATE



CARBON AGGREGATE



BASALT TERRAZZO



PEBBLE TERRAZZO



DOMINO TERRAZZO



BEECH NUWOOD

[Return to main selection page](#)

Please Note: This guide is provided as an indicative resource only, representing the colours available in each product group. The representation of Solid Surface colours digitally, or in print, may not provide 100% accuracy in relation to the colour or finish against physical material samples. BSF Solid Surfaces Ltd. bear no responsibility as to the level of colour accuracy in this digital guide. The contents and colours in this guide are subject to change as per the material supplier's availability.

DuPont™
CORIAN®

GROUP G



MAHOGANY NUWOOD



GOLDEN ONYX



JADE ONYX

[Return to main selection page](#)

Please Note: This guide is provided as an indicative resource only, representing the colours available in each product group. The representation of Solid Surface colours digitally, or in print, may not provide 100% accuracy in relation to the colour or finish against physical material samples. BSF Solid Surfaces Ltd. bear no responsibility as to the level of colour accuracy in this digital guide. The contents and colours in this guide are subject to change as per the material supplier's availability.