

# THE PREMIER SOLID SURFACE SPECIALIST

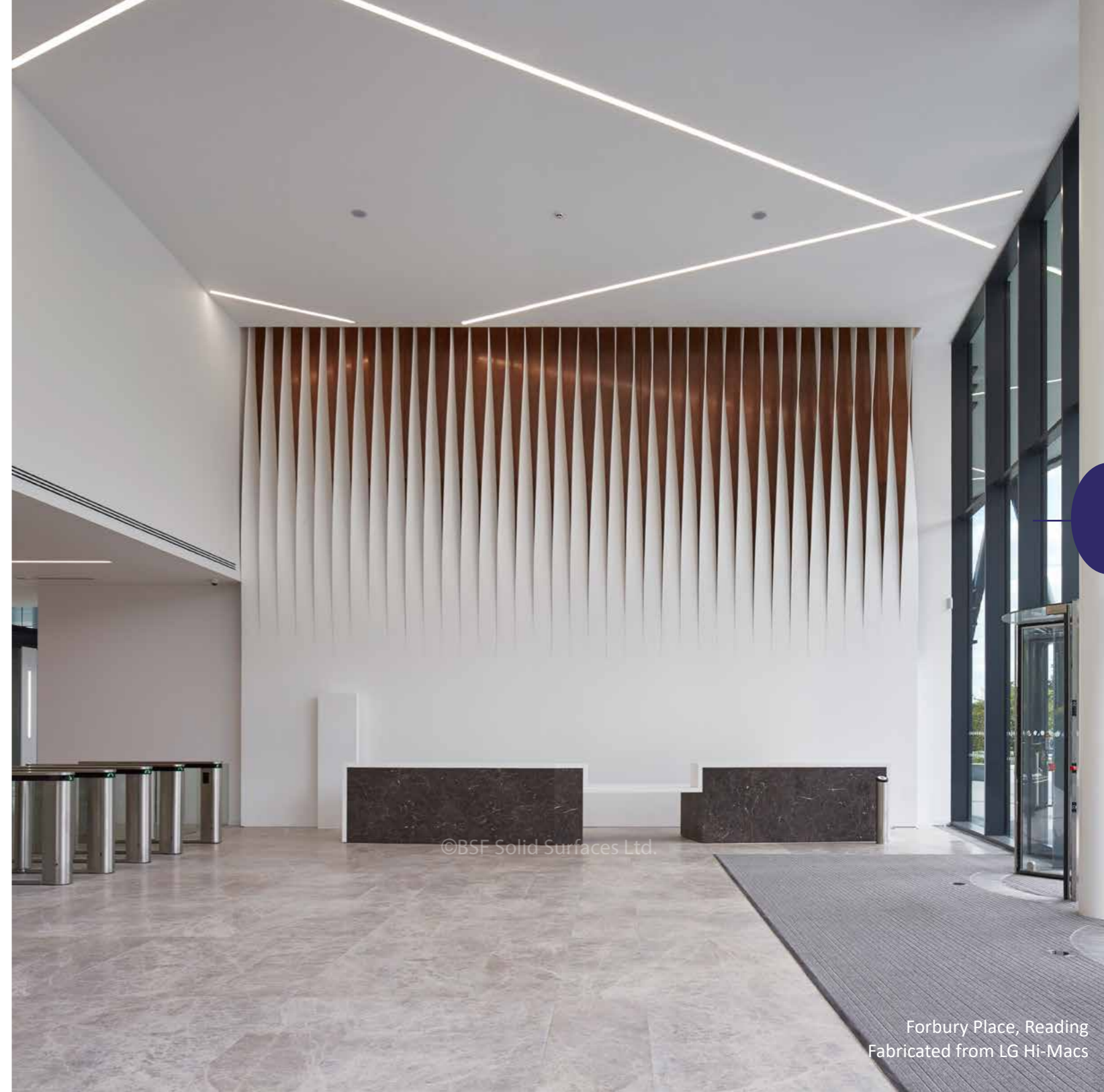


**COMPANY PROFILE**

# Contents

2

	<i>page</i>
<b>About BSF</b>	4
<b>Our Services</b>	8
<b>Our Materials</b>	11
<b>Our Projects</b>	14
<b>Our Accolades</b>	16
<b><u>Project Categories</u></b>	
Museums & Display Modules	5
Corporate Projects	6, 9
Retail, Travel, & Leisure	10
Seating & Desking	12
Sanitary Ware	17



©BSF Solid Surfaces Ltd.

# About BSF

4

## 01 A Team Approach

BSF Solid Surfaces Ltd. are an approved, specialist Fabricator of all major brands of Acrylic Solid Surface - a versatile man-made stone material produced from Aluminium Trihydrate. The company was formed in 1998, following the legacy of the successful Bailey Shopfitters Ltd. from which BSF Solid Surfaces derives its name.

The company prides itself on being a close, integrated team that embraces the principles of quality, customer service, and upholding the highest levels of craftsmanship.

The team includes David Bailey (Founder and Chairman), Elizabeth Bailey (Finance), Nicola Barden (Managing Director), Paul Bailey (Estimating & Production Director), Alison Bott (Project Controller), Amy Tisbury (Accounts & Credit Control), and our internally trained, skilled fabricators and installers.

## 02 Versatile Materials

We are often asked 'what' Solid Surface is, and what the benefits of using it are. The answers are quite simple yet astonish many!

Solid surface is a non-porous, sanitary material with limitless shaping possibilities. Unlike traditional stone work using, for example, Marble or Granite, it can be

shaped and installed with no visible seams, regardless of size. What benefit does this have? Put simply, no seams means there are no crevices for bacteria to breed. Being non-porous means that spillages will not creep into the material and can simply be wiped away. A seamless appearance is highly desirable, making Solid Surface perfect for sanitary ware, including fully integrate sinks and bespoke items.

## 03 Unlimited Possibilities

Using Solid Surface is not just about vanity tops, sinks, or bathrooms (although these remain common uses). The applications are limitless due to the material's shaping properties, when combined with advanced manufacturing techniques and the skill of specialist fabricators. As illustrated through many of our high-profile projects, Solid Surface can be used for offices (e.g. desking), ceilings and soffiting, cladding, internal or curtain walling, sculptural features, display units, even integrated seating / working environments. This is the beauty of the material - that it can be worked 3-dimensionally to create the desired end result, be this straight, curved or otherwise. You would think, given this, Solid Surface was more expensive than natural stone but, economically, this could not be further from the truth.



5

## Museums and Display Modules



## Corporate Projects

# Our Services

8

## 01 Bespoke Craftsmanship

'Settle' is a term we never use with regard to our projects and products. We expect the same outcomes as do our customers - that the finish is perfect - and as individual as your concept. We won't just take your design or requirement and produce it, we aim to advise you on the best option for the project - carrying on the tradition of craftsmen.

Working with our material suppliers we can provide any solution that fits your need - be this a specific colour, textural appearance, or finish. Using advanced Computer-Aided Design (CAD) and Computer-Aided Manufacturing (CAM) techniques, combined with the skills of our fabricators, you can be assured that the final product will be accurate and to specification, regardless of the project size.

## 02 3D Thermoforming

The unique properties of Solid Surface as a material means that, when heated at 168°C, it has formable plasticity. Combined with advanced CAM, CNC, and fabrication techniques, thermoforming allows all manner of arcs, curves, and radii to be formed according to our client's needs, and across 3-Dimensions.

Integrated with the seamless technology of the material, Solid Surface can, therefore, open new possibilities to design solutions, unrestricted from the limitations of using other stone-based materials. Creativity can be unbound

whilst incorporating a hard wearing, non-porous, sanitary material that is economically repairable, stain resistant, and has superior heat and scratch resistance. Add in the ability to etch, inlay or combine with material with lighting effects the key is understanding the lack of limitation.

## 03 A Complete Package

BSF Solid Surfaces Ltd. offer a full turnkey service, from conception to completion, inclusive of surveying and templating. Taking this through to production we then have our dedicated team of skilled installers ready to work with your project team.

From the installation of a full series of countertops, to the cladding of bespoke furniture units; from commercial to domestic projects, or the production of proofs of concept, we are confident in our ability to provide a full service throughout fabrication, production and installation. We are able to competitively price our range of services so these are tailor made to your requirements, using our range of skills to the fullest. This includes the incorporation of V Groover, Multitherm Platten Oven and Press, Holzher and Streibig Saw technology, and 3D Digitizer.



9

## Corporate Projects



## Retail, Travel, & Leisure

# Our Materials

## 01 A Full Range

Solid Surface first came to prominence through the Corian® material first released by DuPont™ in 1967. Since that time the range of types, thicknesses, colours and finishes has expanded significantly - along with the number of material suppliers.

BSF Solid Surfaces Ltd. are accredited fabricators of Solid Surface products made from an expansive range of material suppliers, including:

- Corian®
- LG Hi-Macs
- Staron
- Hanex
- Krion
- Avonite
- Velstone™
- Durat
- Tristone
- Kerrock

## 02 Industry Approved

BSF Solid Surfaces Ltd. are pleased to be highly recognised throughout the industry.

This includes being an accredited member of the DuPont™ Corian® Quality Network for a number of years; a Strategic Partner of LG Hi-Macs; a member of the Hanex Elite Club; a chosen fabricator of Krion by Porcelanosa; and an approved fabricator of Staron, Avonite, Velstone™, Tristone, Durat and Meganite.

Further to this we are an accredited ISO 9001:2015 company, and one recognised as an Investor in People (IIP).

We are a member of Constructionline, and an accredited CHAS (Contractors Health & Safety Assessment Scheme) organisation, demonstrating that we are fully committed to Health and Safety.

BSF have also been well featured across various aspects of the trade press, including feature articles in BUILD Magazine, the Cambridge Architectural Gazette, in addition to examples of our workmanship published within the LG Hi-Macs International Brochure.



## Seating & Desking

# Our Projects

14

## 01 London Transport Museum

BSF were commissioned to undertake a number of elements of this refurbishment project for the London Transport Museum.

All of the 'wavy' items throughout the museum, including troughs, baby changing units, reception desks, and urinal, representing a continual process of 'movement' were produced using specialist thermoforming and fabrication techniques in line with the exact criteria required by the Museum, and installed to generate the seamless appearance

## 02 NAPP Pharmaceuticals

The elliptical reception desk is an iconic piece of design, comprising the highest level of difficulty in thermoforming, and highlighting both the technical capabilities of BSF, along with the notion that we find solutions not problems. Thermoformed in multiple directions, the solid surface not only formed the external features of the reception desk, but furthermore the furniture details - such as drawers, doors, and storage facilities of the desk.

## 03 The OXO Tower

Whilst appearing simple the project incorporating multi-layers of thermoforming in 3 directions, creating the countertop and relief, along with the continuing front panel around the main bar. This form was repeated across a number of units throughout the site.



15



**Clockwise from top left:**

1. London Transport Museum - Thermoformed Vanity Unit
2. NAPP Pharmaceuticals - Thermoformed Reception
3. OXO Tower - Thermoformed bar & Countertops



# Our Accolades

16

As the Premier 3D Thermoforming Solid Surface Fabricator, BSF Solid Surfaces Ltd. continues to work on a wide range of prestigious projects with notable clients, including:

- Francis Crick Institute
- Rathbone Square
- BNP Paribas
- The OXO Tower, London
- The BBC
- Buckingham Palace
- Harrods
- The Shard, London
- KPMG
- SAP
- Bank of China
- The Sultan of Oman
- London Transport Museum
- NAPP Pharmaceuticals
- Price Waterhouse Coopers
- Forbury Place
- The Museum of London
- Bloomberg
- The Natural History Museum
- ITV
- The Tower of London
- McAfee
- Al Khalifa, Kingdom of Bahrain

Regardless of how big or small your project may be BSF Solid Surfaces Ltd. will work with you to find the optimal solution.colour, textural appearance, or finish.

## Award Winning

In 2016 BSF Solid Surfaces Ltd. were honoured with two highly sought after industry awards. Firstly being named Solid Surface Fabricator of the Year by BUILD Construction and Engineering. This achievement was repeated in 2017, recognising our ongoing Secondly being named Solid Surfaces Specialist Fabricator of the Year by Acquisition International.

These awards, in addition to the feedback we receive from customers, supports our aim to uphold quality workmanship.



17

Sanitary Ware

## BSF Solid Surfaces Ltd

22 Tallon Road

Hutton, Brentwood

Essex CM13 1TJ

Tel: 01277 263603

Email: [info@bsfsolidsurfaces.com](mailto:info@bsfsolidsurfaces.com)

## Opening Hours:

Monday - Friday

08:00 to 17:00

